

# BOOKCASES



- Coordinates with variety of styles of furniture in this collection.
- Made of Solid Birch and Birch Plywood
- Anti-Tip Kit included

**STANDARD WIDTHS\*** (inches)

24, 30, 36, 42, 48, 60

*\*Extended tops are not included in the width*  
X

**STANDARD HEIGHTS** (inches)

24, 30, 36, 48, 60, 72, 84

**STANDARD NUMBER OF SHELVES**

24H = 1 shelf

30H = 1 shelf

36H = 2 shelves

48H = 3 shelves

60H = 4 shelves

72H = 5 shelves

84H = 6 shelves

Standard Bookcase Depth: 12"

Standard Shelf Depth: 10 3/4"

## OPTIONS

- Customized Width & Height
- Add wide or narrow beadboard
- Customized Depth up to 20"
- Add base doors
- Custom finishes available
- Add crown molding
- Add additional adjustable shelves



## STYLES



**Shaker**



**Canterbury**



**Cottage**  
With or without  
beadboard trim



**Exeter**



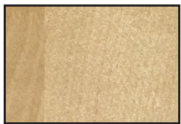
**Vineyard**

**Bedford**



## FINISHES

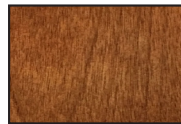
### STAINS



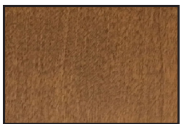
Natural



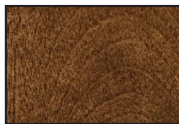
Autumn Gold



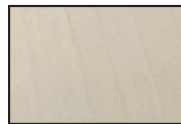
Nutmeg



Early American



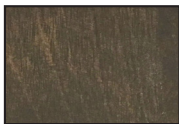
Walnut



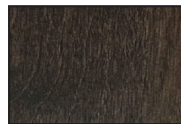
Sandstone



Slate



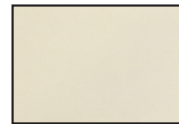
Driftwood



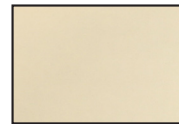
Nitefall

### PAINTS

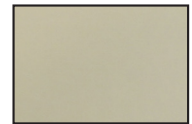
*Painted Finishes are also available as Distressed - Add 10%*



White



Linen



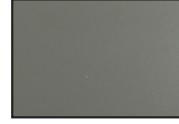
Oyster



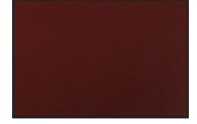
Revere Pewter



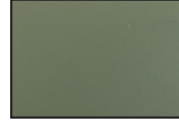
Coventry Gray



Whale Gray



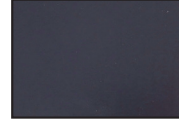
Vintage Red



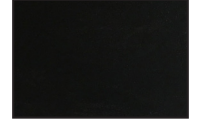
Carolina Gull



Hale Navy



Denim



Black

**Choose your own Custom Color - Add 20%**



Select any paint color from Benjamin Moore or Sherwin Williams, we'll apply our version of it to your furniture.

## ROOM MEASURING SERVICE

### OPTION 1:

We will gladly come to your home and measure your bedroom. We will note location of doors, closets, windows and heating / air conditioning. While we are there, we will discuss possible room layouts with you.

We then take our field measurements back to the office and re-draw the room in scale. When you return to talk further about the project, we will have a completed scaled drawing of your room.

For this service, we require a non-refundable deposit of \$250 per room, which will be applied to your furniture purchase for each room. This service also eliminates the possibility of items not fitting in the room or up the stairs.

★ For additional rooms requiring measuring, please add \$250 for each room ★

### OPTION 2:

Just bring your own measurements into the store, and if we feel necessary, will re-draw the room in scale so we have a good working floor plan of the room. There is no charge for this service. However, you will be responsible for items not fitting up the stairs or in the room.

